



NAVY 
FEDERAL[®]
Recreation Center

Rules

November 2025

GENERAL RULES

Hours: 6AM - 9PM Daily



- General Rules apply to all areas of the Recreation Center.
- All spaces should be utilized for their intended use. Any other activities are prohibited.
- Navy Federal is a tobacco-free campus.
- Motorized vehicles/golf carts are restricted to roadways & designated parking areas.
- Respect, be cautious of, and do not feed any wildlife.
- The Recreation Center is under video security surveillance.
- Children under 18 must be accompanied and supervised by an adult.
- In the event of inclement weather, seek shelter.
- In case of emergency, call 911, or use the emergency call boxes located on designated light poles.

Pets

- Pets must be on a leash at all times.
- Use pet waste stations to clean up after your pet.
- Pets are not allowed on the Sand Volleyball Court, Multipurpose Field, or any artificial turf areas.



USE RECREATION CENTER AT YOUR OWN RISK.

PROHIBITED ACTIVITIES

The prohibited activities below apply to all Recreation Center areas.

- Entering Recreation Center during closed hours.
- Use of tobacco products, smoking, or vaping on the property.
- Solicitation, loitering, peddling, advertising, sale of merchandise, or unauthorized commercial activity of any kind.
 - *Unauthorized commercial activity includes, without limitation: personal training, instruction, or lessons for hire by guests or any attendee while on site.*
- Profanity and amplified music.
- Destruction of property, landscaping, or vegetation.
- Discharging fireworks, rockets, or other incendiaries.
- Fires, firepits, camping, or overnight parking.
- Drugs, alcohol, firearms, littering, or glass containers.
- Skateboards, in-line skates, bicycles, scooters, motorized vehicles, or similar items on sidewalks, fields or courts.
- Inflatable structures, mechanical rides, waterslides, or similar items.
- Swimming, fishing, or sunbathing in or around ponds.

Failure to comply with these rules may result in removal from the park.



USE RECREATION CENTER AT YOUR OWN RISK.

PAVILION

This space is reservable for up to 50 people for a maximum of 3 hours.

- Do not remove furnishings from pavilion.
- No skateboards, in-line skates, motorized vehicles, or bikes allowed in pavilion.
- No grilling, cooking, food trucks, or open flames of any kind.



FIELD SPACES

The Softball Field requires reservations for use. Field spaces are reservable for up to 50 people for a maximum of 3 hours.

The following are prohibited on the fields:

- Animals
- Motorized vehicles
- Golfing
- Drugs/Alcohol
- Firearms
- Fireworks
- Littering
- Inflatable structures, mechanical rides, and waterslides.



- Multipurpose Field (*Lighted*)
- Soccer Fields (*Unlit*)
- Flag Football Field (*Unlit*)

USE RECREATION CENTER AT YOUR OWN RISK.

BASKETBALL COURT

This space is reservable for up to 20 people for a maximum of 1 hour.

If using for drop-in use, please limit play to one hour if others are waiting.

- Appropriate footwear required.
- No spitting, gum, or food allowed on the courts.
- No dunking on or hanging from the rim.



SAND VOLLEYBALL

This space is reservable for up to 20 people for a maximum of 2 hours.

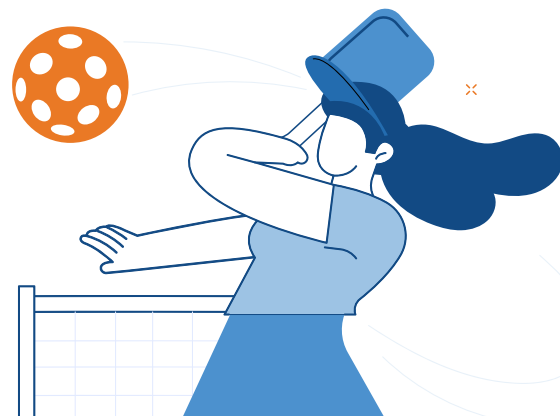
- No swinging or pulling on the volleyball net.
- No food, glass, or alcoholic beverages allowed.
- No pets in court area.
- Court area should only be used for its intended purpose.



PICKLEBALL COURT

This space is reservable for up to 6 people for a maximum of 1 hour.

- Appropriate footwear required.
- No spitting, gum, or food allowed on the courts.
- No hanging on net.



USE RECREATION CENTER AT YOUR OWN RISK.



FORMAL AND INFORMAL LAWNS

These spaces are reservable for up to 50 people for a maximum of 3 hours.

- Motorized vehicles/Golf Carts are restricted to roadways & designated parking areas.
- Be cautious of and do not feed wildlife.
- Pets must be on a leash at all times, and use pet waste stations to clean up after your pet.

Prohibited Lawn Activities

- Solicitation, loitering, peddling, advertising, or sale of merchandise.
- Destruction of property, landscaping, or vegetation.
- Grilling, cooking, food trucks, or open flames of any kind.



USE RECREATION CENTER AT YOUR OWN RISK.

YOGA LAWN

This space is for drop-in use only and cannot be reserved.

- No pets on lawn.
- No food or beverage except water allowed on the yoga lawn.



FITNESS COURT & DRILL ZONE

This space is for drop-in use only and cannot be reserved.

- Use of Fitness Court restricted to guests age 14 years and older.
- Appropriate fitness attire must be worn.
- Use each drill station and equipment area for its intended purpose.
- Follow equipment instructions at each station to avoid injury.
- 20-minute limit per station when others are waiting.
- No food and beverages other than water are allowed on the Fitness Court.
- *Unauthorized commercial activity includes, without limitation:* personal training, instruction, or lessons for hire by guests or any attendee while on site.



USE RECREATION CENTER AT YOUR OWN RISK.